

Certificate of Analysis

Product Name: Disulfoton-sulfoxide
PESTANAL™, analytical standard

Product Number: 31562

Batch Number: BCCC5834

Brand: Sigma-Aldrich

CAS Number: 2497-07-6

Formula: C₈H₁₉O₃PS₃

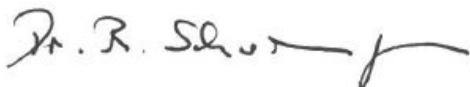
Formula Weight: 290.40

Storage Temperature: 2-8 C

Expiration Date: FEB 2024

Quality Release Date: 05 MAR 2020

TEST	SPECIFICATION	RESULT
APPEARANCE (COLOR)	COLORLESS TO YELLOW AND COLORLESS TO LIGHT BROWN- -YELLOW	COLORLESS
APPEARANCE (FORM)	LIQUID	LIQUID
PURITY (HPLC AREA %)	≥ 95.0 %	95.0 %
REFRACTIVE INDEX N20/D	1.5269 - 1.5309	1.5410
PROTON NMR SPECTRUM	CONFORMS TO STRUCTURE	CONFORMS



Dr. Reinhold Schwenninger
Quality Assurance
Buchs, Switzerland

Sigma-Aldrich warrants that at the time of the quality release or subsequent retest date this product conformed to the information contained in this publication. The current specification sheet may be available at Sigma-Aldrich.com. For further inquiries, please contact Technical Service. Purchaser must determine the suitability of the product for its particular use. See reverse side of invoice or packing slip for additional terms and conditions of sale.

Certificate of Analysis

Dionex Ultimate 3000 RSLC		
Pump : LPG-3400RS	Injection Time: 28.02.20 11:43	
Autosampler: WPS-3000	Processed By: Berthet Mikael	
Detector: VWD-3400	Vial Number: BB2	
Column: Supelco Ascentis Express C18, 2.7 um	Column S/N: -	
Column Dim.: 50 x 2.1 mm	Sample Type: Unknown	
Mobile Phase:	Injection Volume: 1.0 µl	
%A : Acetonitril	Flow: 1.00 ml/min	
%B : %B	Column Temp. (°C): 35.0	
%C : %C	Run Time: 6.00 min	
%D : H3PO4 0.01 M		
Gradient : see Figure 1		
Sample Prep.: 1.7 mg sample in 1 ml Methanol		

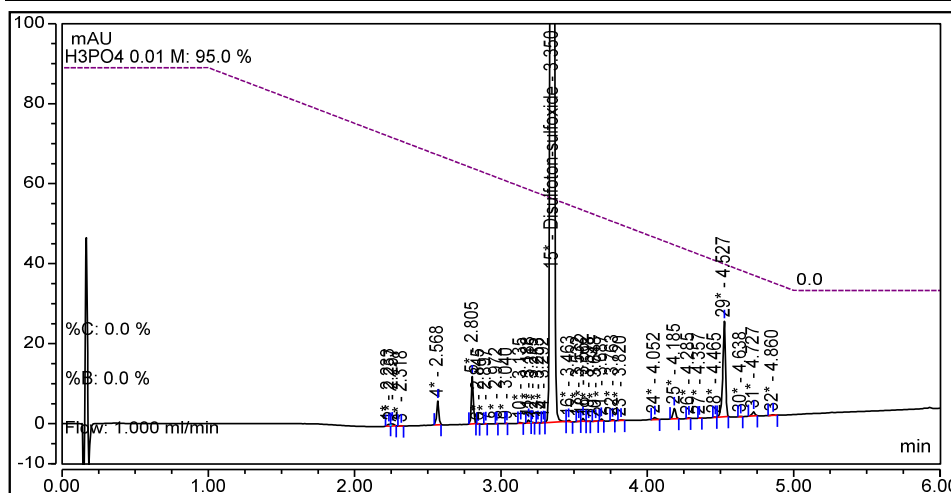


Figure 1: Zoomed Chromatogram

No.	Ret. Time min	Peak Name	Area mAU*min	Height mAU	Amount	Rel. Area %
1	2.233		0.00991	0.45461	n.a.	0.05
2	2.257		0.01423	0.57053	n.a.	0.07
3	2.318		0.00196	0.09348	n.a.	0.01
4	2.568		0.09816	5.91485	n.a.	0.50
5	2.805		0.18942	11.80656	n.a.	0.96
6	2.845		0.00079	0.07455	n.a.	0.00
7	2.897		0.00097	0.07045	n.a.	0.00
8	2.972		0.00071	0.07025	n.a.	0.00
9	3.040		0.00058	0.05264	n.a.	0.00
10	3.135		0.00381	0.20321	n.a.	0.02
11	3.188		0.01383	0.74191	n.a.	0.07
12	3.215		0.00329	0.20174	n.a.	0.02
13	3.253		0.00148	0.12430	n.a.	0.01
14	3.292		0.00134	0.10972	n.a.	0.01
15	3.350	Disulfoton-sulfoxide	18.73755	1063.30677	n.a.	95.00
16	3.463		0.00634	0.34554	n.a.	0.03
17	3.532		0.00123	0.08961	n.a.	0.01
18	3.562		0.01232	0.77034	n.a.	0.06
19	3.598		0.00172	0.09337	n.a.	0.01
20	3.648		0.00122	0.08082	n.a.	0.01
21	3.687		0.00787	0.48217	n.a.	0.04
22	3.763		0.00488	0.29462	n.a.	0.02
23	3.820		0.00282	0.13194	n.a.	0.01
24	4.052		0.01133	0.52096	n.a.	0.06
25	4.185		0.05384	2.55655	n.a.	0.27
26	4.285		0.00217	0.13955	n.a.	0.01
27	4.357		0.00084	0.06340	n.a.	0.00
28	4.465		0.00102	0.06383	n.a.	0.01
29	4.527		0.51164	23.84824	n.a.	2.59

Certificate of Analysis

30	4.638		0.00144	0.09459	n.a.	0.01
31	4.727		0.02243	1.03026	n.a.	0.11
32	4.860		0.00341	0.15557	n.a.	0.02
Total:			19.72453	1114.55691		100.00

Table 1: Integration